

V5
ceramic
LIGHT ENGINE



KOSMOS

SERIES USER MANUAL

March 2021. Firmware V01.02



made to last

This guide provides information about how to use the product functions to illuminate with this equipment as well as warnings on his use.

These are products of professional use for exterior and interior locations or studio and must be operated only by qualified technical personnel.

To obtain the maximum features, please read the following operating instructions very carefully before using this fixture for the first time. Please keep these operating instructions for you and subsequent users to reference in the future.

THELIGHT Luminary for cine and TV, S.L.

Every KOSMOS color tunable Fresnel is offered in two different versions: LOCATION and STUDIO dustproof. The main differences are:

The LOCATION version includes

- Can be powered both AC and DC (90-264V AC and DC 26-48V DC)
- 1x XLR-3 DC in connector
- Built-in LumenRadio for DMX-RDM wireless control
- Wi-Fi Art-Net wireless remote control
- Bluetooth wireless remote control

The STUDIO version includes:

- Must be exclusively powered on AC (90-264V AC)
- 1x RJ45 connector for Ethernet wire control
- Wi-Fi Art-Net wireless remote control
- Bluetooth wireless remote control

SAFETY PRECAUTIONS

For your own safety, please read and follow all safety instructions and warnings. The symbols and their meanings are explained below.



WARNING

Possible risk of injury or damage to equipment



DANGER

Indicates the risk of electric shock or fire danger that could result in injury or damage to equipment.

GROUNDING

In order to protect against risk of electric shock, the installation should be properly grounded. Defeating the purpose of the grounding type plug will expose you to the risk of electric shock.



RISK OF BURNS

The housing can reach high temperatures. Keep a safety distance of 0,25 m / 10" to adjacent surfaces on all sides of the fixture.

Do not cover the lamp head while using it. Proper ventilation must be provided on the upper ventilation slots and the bottom air filter.

Avoid exposing the lamp head to the heat radiation of other light fixtures.

Do not place the product on heat sources.

Do not power on the product if the ambient temperature exceeds 45° C.

Keep the cables away from the fixture,



DANGER OF LIFE - MAINS VOLTAGE

Disconnect the KOSMOS from the mains voltage before replacing a damaged fuse.

Never bridge a fuse.



HIGH LIGHT BEAM INTENSITY

The lamp head is equipped with power LED. Due to their high light-output intensity don't stare directly into the light source.

Do not open the product. Doing so will invalidate the product warranty.

Do not attempt to repair any part of the product on your own. Maintenance and repair work to be carried out only by VELVET Service Centre.

Never connect the product to a dimmer system or a dimmer channel in non-dim mode. Doing so will damage the KOSMOS fixture electronics. Damages caused by connecting the product to a not suitable power source are not covered by the warranty.

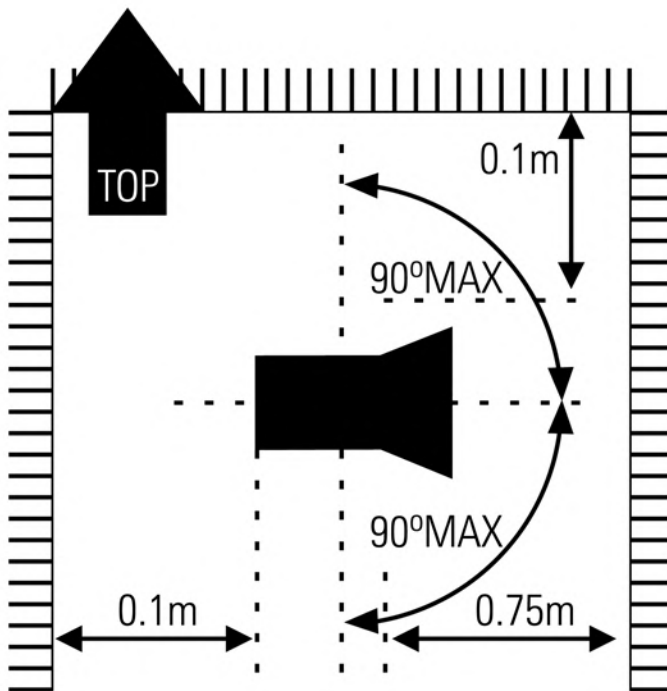
Never point a light beam from another fixture into the light KOSMOS source.

WORKING CONDITIONS

Maximum allowed tilt angles are 90° up and 90° down

Ambient temperature (at the place of operation or storage): Minimum -20°C Maximum + 45°C

Minimum distances from inflammable surfaces



WARRANTY

VELVET (THELIGHT Luminary for cinema and TV, S.L.) does not assume any responsibility for lighting failures caused by malfunction of this product.

The manufacturer disclaims liability for any damage to persons or property caused by inappropriate operation, damage of this kind lies in the responsibility of the operator.

This product is manufactured to local specifications and the warranty is valid within the country of purchase. Should the product fail or malfunction while you are abroad, the manufacturer assumes no responsibility for servicing the product locally or bearing the expenditure incurred thereof.

Various symbols are used throughout this instruction manual and on the product to prevent physical harm to you or other people and damage to property.



This equipment has been checked and meets the requirements of general safety for electronic devices. These requirements are specified to provide a reasonable protection against electromagnetic interferences when the equipment is used in commercial environments.

This equipment generates, uses and can emit waves of radio frequency, and if not properly used following the instructions of this manual can produce interferences in radio communications. The use of this equipment in residential areas can produce interference, the user will be the only responsible of correcting them.

www.velvetlight.tv

The total or partial reproduction of this guide is prohibited without the express written permission of VELVET.

VELVETLight technology is protected under Spanish license laws with international patents pending.

Information and specifications in this document are subject to change without notice.

2020 © Copyright VELVET. All rights reserved.

02

INTRODUCTION

- 03 SAFETY PRECAUTIONS
- 04 WORKING CONDITIONS
- 05 WARRANTY
- 07 MAIN FEATURES
- 09 FIRMWARE HISTORY
- 10 QR FAST ACCESS

11

RANGE of FIXTURES

- 11 KOSMOS 400 COLOR STUDIO
- 12 KOSMOS 400 COLOR LOCATION
- 13 PHOTOMETRICS

14

ACCESSORIES

- 14 POWER
- 15 REMOTE CONTROL
- 16 BEAM CONTROL
- 18 RIGGING

19

INSTALLATION

- 19 MOUNTING and SECURITY
- 21 POWER OPTIONS AC POWER
- 22 POWER OPTIONS DC POWER

23

FIXTURE MENU

- 23 FIXTURE TACTILE BUTTON OVERVIEW
- 24 DISPLAY STRUCTURE
- 25 MENU OVERVIEW
- 26 CONTROL MODE OPTIONS
- 26 ZOOM/ BEAM ADJUSTMENT
- 27 CCT MODE (WHITE LIGHT)
- 28 HSI MODE (COLOR LIGHT)
- 29 RGB MODE (COLOR LIGHT)
- 30 GELS MODE (COLOR LIGHT)
- 32 L GEL LIST
- 35 R GEL LIST
- 37 PRESETS

38

SETTINGS

- 38 DMX-RDM CONTROL
- 40 8BIT DMX MAP CHART
- 41 16BIT DMX MAP CHART
- 42 DIMMING CURVE
- 43 REMOTE CONTROL
- 45 WIRELESS CONTROL
- 46 WI-FI ArtNet
- 48 BLUETOOTH
- 49 VELVET GOYA App
- 51 ABOUT and FACTORY PRESET
- 52 FIRMWARE UPDATE
- 53 MAINTENANCE and CARE

54

REGULATIONS

- 55 WARRANTY

Thank you for selecting KOSMOS LED Fresnel from VELVET.

The KOSMOS are compact color-tunable Fresnel producing unprecedented output with motorized ZOOM and total wireless control. KOSMOS are much more efficient than a traditional tungsten Fresnel and are the LED color-tunable Fresnel efficiency market leaders.

The KOSMOS emit variable color light with adjustable color temperature, adjustable green/magenta correction and remotely controlled beam angle. Every KOSMOS model can be controlled using DMX-RDM protocol, Art-Net through LumenRadio wireless, Wi-fi Art-Net, Bluetooth or locally with full-color touchscreen plus two rotary knobs.

KOSMOS has two important control advantages:

- You can locally or remotely adjust the beam angle with any control mode.
- Any base white light color temperature can be set to apply any color or gel.

ELECTRONIC ZOOM

With KOSMOS you are entering on the digital beam control era. From 13° spot to 56° flood, digital beam control allows you to change the beam angle, mid-shot without manual adjustment. No hassle replacing fixed optics to have different beam angles.

With KOSMOS beam change is instant at your fingertips, local or remotely, wire or wireless.

V5 CERAMIC LIGHT ENGINE

VELVET KOSMOS includes a state of the art VELVET proprietary super compact 35mm full-color light engine. A total of 212 Red, Green, Blue, Warm White and Cool White high-power LED are arranged over a ceramic substrate with a special distribution to produce a homogeneous beam of very powerful light.

The light engine compact diameter acts as a point source to produce sharp, single shadow light with bright and saturated colors. The finest quality Red, Green and Blue LED emit highly saturated colors while the addition of high CRI Warm and Cool white LED produce a massive amount of white light over only color light engines.

And certainly no worries about color and skin tones reproduction for V5LED technology from VELVET offers CRI / TLCI values beyond 95.

The KOSMOS V5LED technology (R+G+B+W+CW) offers clear advantages on light quality and color adjustment:

- More saturated colors
- More natural white light with much wider color gamut
- Higher degree of color control
- Higher light output and less electric consumption thanks to its ceramic light engine efficiency

3D CHAMBER COOLING SYSTEM

Compactness comes from an extremely compact and lightweight cooling system designed by VELVET. Every KOSMOS includes a passive liquid cooling system contained into a sealed 3D copper chamber with a silent fan protected by an air filter.

This advanced cooling system is controlled with three heat sensors and a variable speed silent fan to keep not only the light engine but also the electronics at the optimum temperature.

GLASS FRESNEL LENS

A true 12" (300 mm) borosilicate glass Fresnel lens produces a traditional effect, consistently creating 13° to 56° single-shadow beam angles, clean color reproduction and ensuring years of reliable operation.

The big size of the lens produce a natural, hard and directional Fresnel light with the VELVET character to create real images.

TOTAL CONTROL BUIT-IN

KOSMOS can be fully, quickly and easily controlled in any possible way, locally or wirelessly, or from your smartphone with VELVET App.

WIRELESS CONTROL

- DMX-RDM through LumenRadio CRMX (only KOSMOS Location version)
- Wi-Fi Art-Net to control from Smartphone or tablet with VELVET Goya App*
- Bluetooth to control from Smartphone or tablet with VELVET Goya App*

WIRE CONTROL

- DMX-RDM through XLR-5 in and through connectors
- Art-Net through Ethernet RJ-45 connector (only STUDIO version).

LOCAL CONTROL

The full color touchscreen simplifies any light, zoom or effects setting while two rotary knobs provide precise manual adjustments.

- Gels list are displayed as colors
- White light or color adjustment presets are always visible on its real color.
- You can immediately save or load any preset including the beam light angle
- You can instantly reset to 3200K or 5600K white light.

KOSMOS gives you immediate remote control over beam angle, color, effects or presets from your smartphone or tablet.

*VELVET Goya is a free of charge App available for Android and iOS.

V01.01 VERSION NEW FEATURES

- Wi-Fi remote control implemented
- Bluetooth remote control implemented
- DMX mode can be changed while the fixture is receiving DMX commands

V01.02 VERSION NEW FEATURES

- GELS mode implemented
- PRESETS implemented
- LUMENRADIO remote control implemented
- ETHERNET implemented with IP Mode selection (exclusively on KOSMOS Studio)
- 10x DMX modes 8 bit + 10x DMX modes 16 bit
- DMX-RDM allows to select or change the DMX modes



KOSMOS WEBSITE



KOSMOS SUPPORT



KOSMOS UPDATED PDF
USER MANUAL

400 studio



- 01 300mm/ 12" Borosilicate glass fresnel lens
- 02 Touchscreen display
- 03 Rotary knobs
- 04 XLR-5 DMX RDM IN/OUT connectors
- 05 Wireless functions antenna
- 06 LAN RJ-45 connector
- 07 Main power switich
- 08 8A AC fuse
- 09 POWERCON TRUE 1 IN/OUT connectors
- 10 USB connector

OPTICAL SYSTEM

- LIGHT APERTURE
- BEAM ANGLE
- LIGHT INTENSITY
- COLOR TEMPERATURE
- GREEN-MAGENTA
- COLOR RENDITION
- HIGH SPEED
- LIGHT ENGINE
- COLOR CONTROL MODES

motorized ZOOM Fresnel + changeable lampheads
 glass Fresnel lens 300mm / 12"
 15° to 56° (half peak), motorized zoom stepper motor
 smooth 0 to 100%, three selectable dimming curves
 continuously adjustable from 2500K to 10000K
 continuously adjustable (full + green to full -green)
 typical 95 CRI / 95 TLCI
 over 12,000 fps

35mm full color spectrum R + G + B + W + CW VELVET ceramic LED
 CTT, HSI, CTT + RGB, GELS and EFFECTS with ZOOM in every mode
 NOTE: base Kelvin white light can be set combined with any color
 2x rotary knobs and full-color touchscreen display
 full DMX-RDM with XLR-5 IN & OUT connectors
 Ethernet Art-Net with RJ-45 connector

INTERFACE

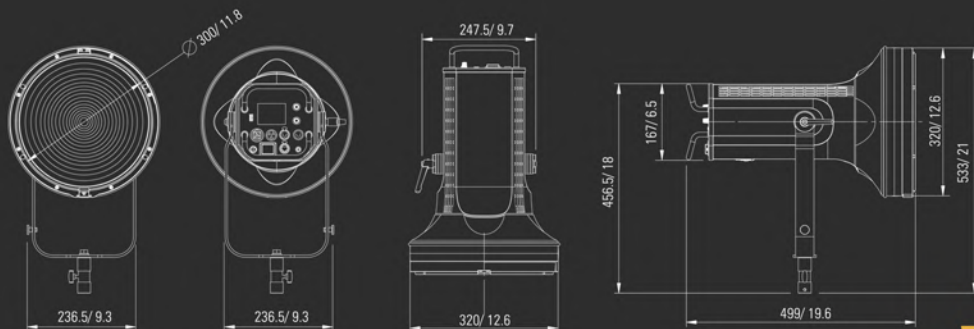
- LOCAL CONTROL

Wi-Fi Art-Net sCAN and Bluetooth, Android and IOS free VELVET Goya App
 9.3 kg/ 20.5 lbs fixture. 9.8 kg/ 22.6 lbs fixture + yoke
 400W (3.7 Amps at 110 VAC) with PFC
 90-264V AC 50/60Hz PowerCon TRUE1 IN & OUT
 exceeds 50,000 hours

WIRELESS CONTROL

- WEIGHT
- POWER
- AC INPUT VOLTAGE
- LED RATED LIFE (L70)
- COOLING
- PROTECTION
- CONSTRUCTION AND FINISH

passive liquid cooling system into sealed 3D chamber with silent fan
 IP30, indoor or outdoor protected use
 fixture and yoke made of die-cast aluminum



400 location



- 01 300mm/ 12" Borosilicate glass fresnel lens
- 02 Touchscreen display
- 03 Rotary knobs
- 04 XLR-5 DMX RDM IN/OUT connectors
- 05 Wireless functions antenna
- 06 XLR-3 DC Power IN connector
- 07 Main power swithc
- 08 8A AC fuse
- 09 POWERCON TRUE 1 IN/OUT connectors
- 10 USB connector

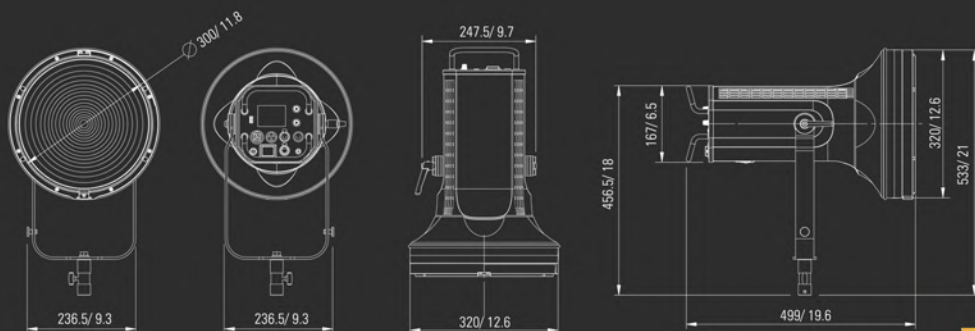
OPTICAL SYSTEM
 LIGHT APERTURE
 BEAM ANGLE
 LIGHT INTENSITY
 COLOR TEMPERATURE
 GREEN-MAGENTA
 COLOR RENDITION
 HIGH SPEED
 LIGHT ENGINE
 COLOR CONTROL MODES

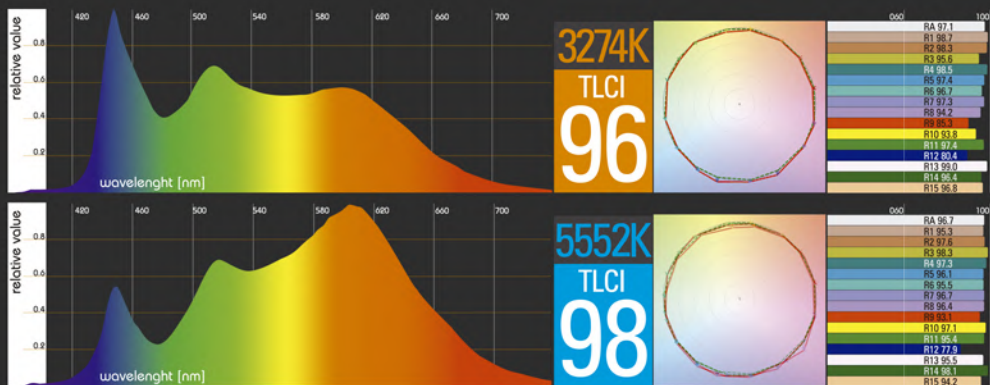
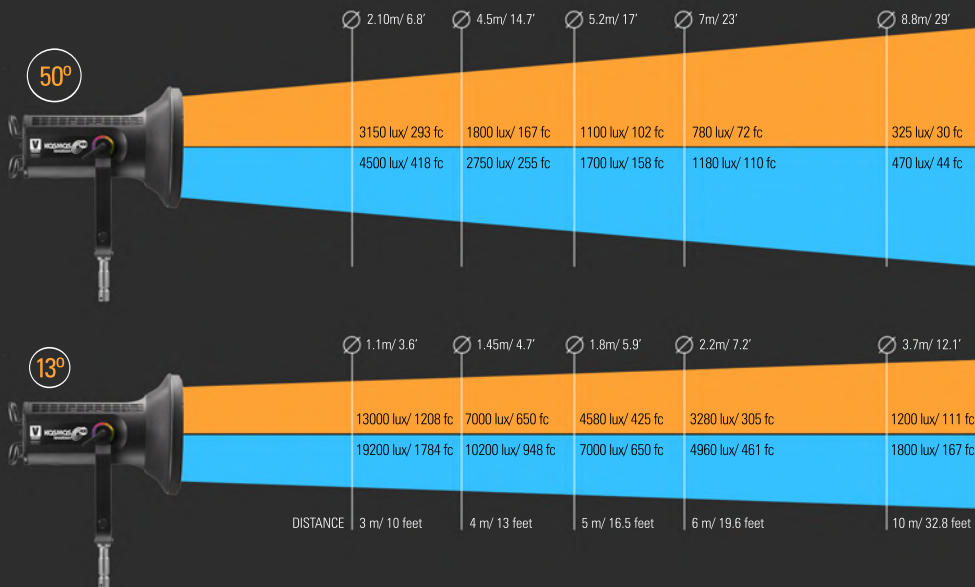
INTERFACE
 LOCAL CONTROL
 WIRELESS CONTROL

WEIGHT
 POWER
 AC INPUT VOLTAGE
 DC INPUT VOLTAGE
 LED RATED LIFE (L70)
 COOLING
 PROTECTION
 CONSTRUCTION AND FINISH

motorized ZOOM Fresnel + changeable lampheads
 glass Fresnel lens 300mm / 12"
 15° to 56° (half peak), motorized zoom stepper motor
 smooth 0 to 100%, three selectable dimming curves
 continuously adjustable from 2500K to 10000K
 continuously adjustable (full + green to full -green)
 typical 95 CRI / 95 TLCI
 over 12,000 fps
 35mm full color spectrum R+G+B+W+CW VELVET ceramic LED
 CTT, HSI, CTT+RGB, GELS and EFFECTS with ZOOM in every mode
 NOTE: base Kelvin white light can be set combined with any color
 2x rotary knobs and full-color touchscreen display
 full DMX-RDM with XLR-5 IN & OUT connectors
 LumenRadio CRMX, Wi-Fi Art-Net sCAN and Bluetooth, Android and IOS free VELVET
 Goya App

9.3 kg/ 20.5 lbs fixture. 9.8 kg/ 22.6 lbs fixture + yoke
 400W (3.7 Amps at 110 VAC) with PFC
 90-264V AC 50/60Hz PowerCon TRUE1 IN & OUT
 26-48V DC XLR-3 in connector
 exceeds 50,000 hours
 passive liquid cooling system into sealed 3D chamber with silent fan
 IP30, indoor or outdoor protected use
 fixture and yoke made of die-cast aluminum

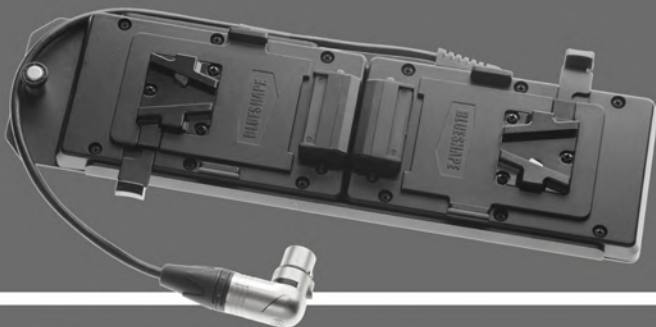




DOUBLE VLOCK

adapter on quick link KOSMOS
plate with XLR3 connector

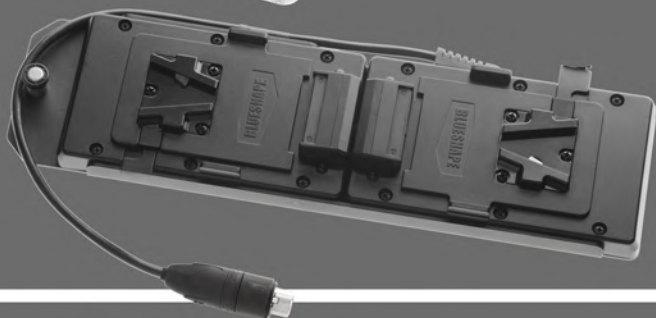
Ref VE-DVLOCK



DOUBLE VLOCK IP54

adapter on quick link KOSMOS
plate with XLR3 connector

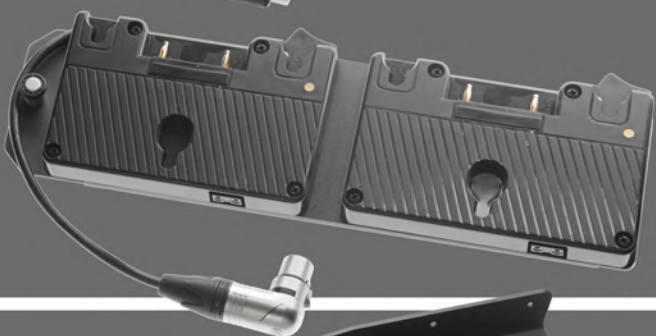
Ref VE-DVLOCKIP



DOUBLE GOLD

adapter on quick link KOSMOS
plate with XLR3 connector

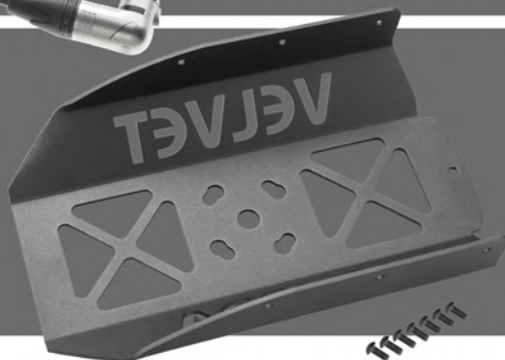
Ref VE-DVLOCKIP



BATTERY PLATE KIT

quick link adapter for VE-DVLOCK/IP
& VE-DGOLD/IP

Ref VK42-BP



XLR-3 EXTENSION CABLE

4.5meters/ 15 feet XLR-3 to XLR-3 connectors

Ref VE-DVLOCK



XLR-5 DMX EXTENSION CABLE

cable with male and female XLR-5 connectors

3m/ 10 feet Ref DMX-DMX3M

6m/ 20 feet Ref DMX-DMX6M

10m/ 33 feet Ref DMX-DMX10M



VELVET ROUTER

Wi-Fi router with automatic connection to remotely control KOSMOS through Art-Net

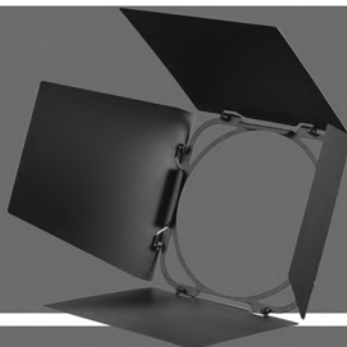
Ref VE-ROUTER



BARNDOORS

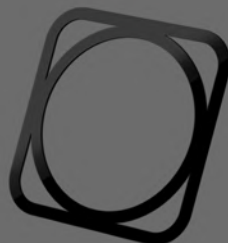
kit of 4-leaf rotating barndoors for

KOSMOS 400 Ref. VK400-RB



FILTER FRAME

KOSMOS 400 Ref. VK400-FF



SNAPBAG

foldable softbox + transport bag
by DoPChoice

KOSMOS 400 Ref. VK400-SB



SNAPGRID for SNAPBAG

foldable grid + transport bag
by DoPChoice

KOSMOS 400 Ref. VK400-SGXSB



LANTERN

foldable china ball softbox + transport bag
by DoPChoice

KOSMOS 400 Ref. VK400-SL



POLE OPERATED YOKE
KOSMOS studio yoke

Ref VK42-YPO



SAFETY CABLE

5 mm cable. 1 m/ 3 feet, maximum load 25 kg

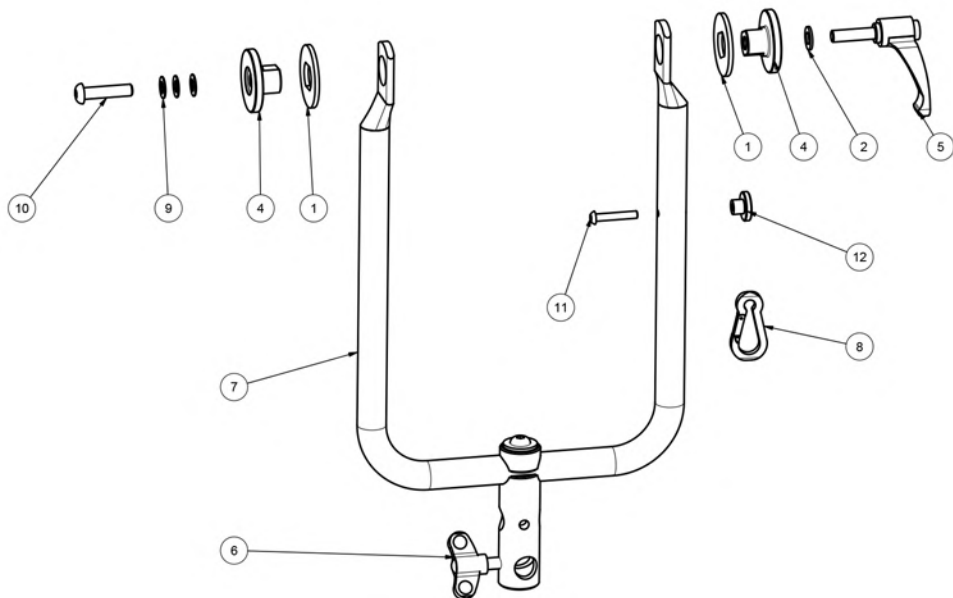
Ref SLI-200000FS



YOKE to FIXTURE ASSEMBLY

MANUAL YOKE

The KOSMOS is delivered with its own manual yoke assembled.
 If you need to reassembled it for any reason place the KOSMOS with the Fresnel lens facing downwards on an even and clean surface and follow the graphic below.



ELEMENT	QUANTITY	REFERENCE	DESCRIPTION
1	2	TOR-KWS	Ferodo washer for KOSMOS yokes
2	1	TOR-D125M8T	Standard washer M8 black
3	1	M4300P560002	40cms/ 16 inches nylon security tie for yoke
4	2	M4300P17S000	KOSMOS yoke side nylon bushing
5	1	M3800P190000	EVO1, EVO2, KOSMOS400 adjustable handle M8x30
6	1	EV-2816TK	Kit 28mm Junior pin & 16mm Baby receiver with multi-mount for EVO tube yoke
7	1	M4300P100000	KOSMOS 200 and 400 tubular yoke
8	1	TOR-D5299-5X50	Carabiner 50x5mm
9	3	TOR-D16983M8	Disc spring M8
10	1	TOR-D7380M8X30T	Socket button head cap screw M8x30 black
11	1	TOR-D7380M5X30	Button head screw M5x30
12	1	TOR-D466M5	Knurled nut M5

MOUNTING and SECURITY

VELVET KOSMOS fixtures have been designed to be easily installed and rigged up on studio, special locations and vehicles.



When a VELVET KOSMOS and any other component is mounted in a hanging position it must be secured with a safety cable rated at a minimum of ten times the weight of the light fixture including its accessories.

Secure the KOSMOS with a safety cable from the mounting structure or truss through the fixture yoke.

POWERING KOSMOS

AC POWER 90 to 264 VAC



GROUNDING: In order to protect against risk of electric shock, the AC installation should be properly grounded. The AC mains power supply must be fitted with a fuse or circuit breaker and ground-fault (earth-fault) protection. Defeating the purpose of the grounding type plug will expose you to the risk of electric shock.



HIGH LIGHT BEAM INTENSITY: The lamp head is equipped with power LED. Due to their high light-output intensity don't stare directly into the light source.



Always connect the KOSMOS direct to AC power. Do not connect the fixture to a dimmer system. Doing so will damage the fixture.

The KOSMOS 400 Studio can be exclusively powered by AC power. Connect the power cable to the PowerCon TRUE1 TOP and the power plug with a mains power outlet.

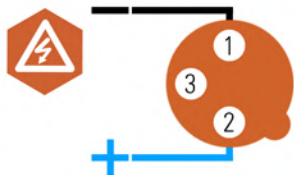


POWERING KOSMOS

The KOSMOS 400 Location can be powered by AC power, by any battery from 26 to 48 VDC or by using two Vlock or two Gold batteries and it delivers the same full output both AC and DC powered.

BATTERY POWER 24 to 48 VDC

Connect any battery from 26 to 48 VDC to the XLR3 connector.



When powering VELVET KOSMOS Location from an external battery through the XLR3 connector check that the pin-out of the battery matches the pin-out of the KOSMOS as shown in the pin-out picture at the bottom of the fixture.

Wrong assigned pin-outs can damage the KOSMOS Location and/or the battery.

The KOSMOS Location switches off when the battery voltage drops below 26 V DC. The fixture will be damaged when the battery voltage exceeds 50 V DC.

To ensure maximum performance of the equipment use only high-load capacity batteries with a high continuous draw meaning a Discharge Current of at least 10A.

VLOCK/ GOLD BATTERY POWER

VELVET KOSMOS Location can also be directly powered with the double VELVET Vlock or Gold battery adapter.

Attach the quick link Double Vlock or Gold plate by aligning the center pin of the mounting plate to the center hole on the fixture docking plate. Rotate the Double Vlock or Gold plate clockwise until the four shoulder rivets drop into their receptacles. A locking pin will snap into place when the plate is properly locked. Connect the XLR3 to the connector.



Secure the Vlock or Gold plate by inserting the locking pin into place.



POWER ON/OFF

After switching on the KOSMOS initializes for a few seconds to be ready for operation through its full-color touchscreen plus two rotary knobs.

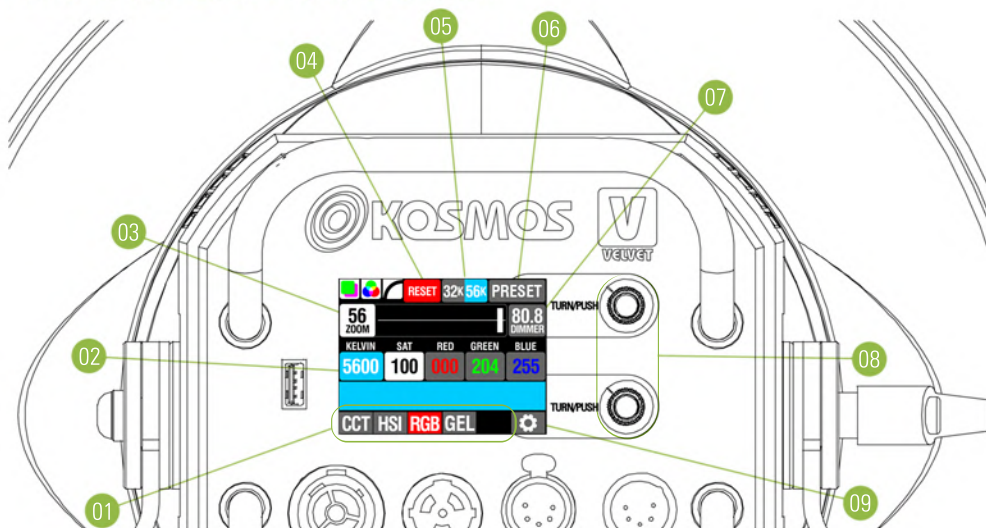
The KOSMOS will show the last white light, color and zoom settings and the source will emit light only as per the last setting.



HIGH LIGHT BEAM INTENSITY

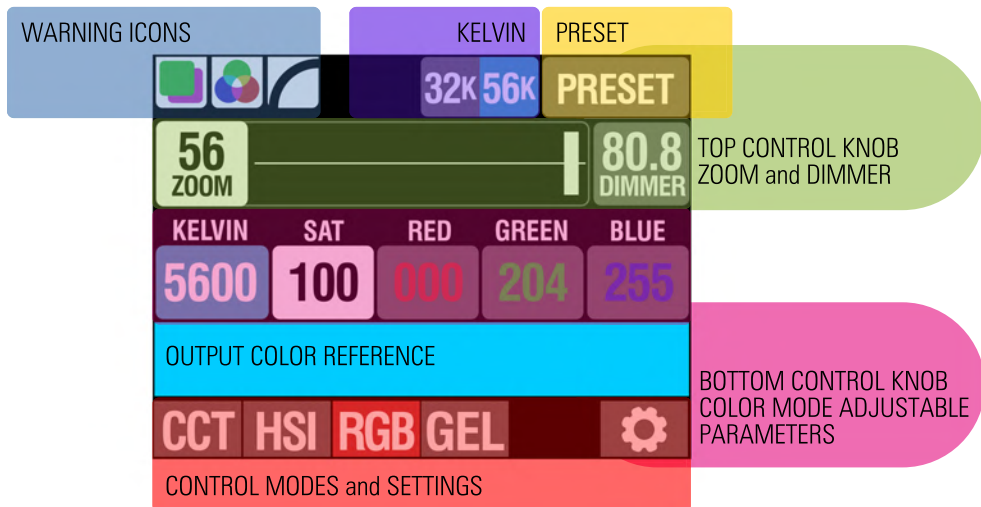
The lamp head is equipped with power LED. Due to their high light-output intensity don't stare directly into the light source.

FIXTURE TACTILE BUTTONS OVERVIEW



MAIN FUNCTION/ SECONDARY FUNCTION

- | | | |
|---------------------|----|--|
| COLOR MODES | 01 | Takes you to CCT white mode, HSI, RGB color mode, GELS selection and EFFECTS selection mode |
| KELVIN | 02 | Once selected you can precisely adjust the KELVIN value by rotating the Bottom Control Knob |
| ZOOM BUTTON/ SLIDER | 03 | Once selected you can precisely adjust the light beam angle by rotating the Top Control Knob/ Quick tactile ZOOM adjustment/ Shows the actual light beam angle |
| RESET | 04 | Resets the fixture to factory presets |
| 32/56K | 05 | Goes to preset 3200K, 5600K and back to the last white light and color settings |
| PRESET | 06 | Lets you save or load any white light or color settings combined with zoom/actual white light, color and ZOOM settings |
| DIMMER | 07 | Once selected you can precisely adjust the light Intensity by rotating the Top Control Knob Shows the actual light Intensity level |
| CONTROL KNOBS | 08 | Manually and precisely adjust the selected option |
| SETTINGS | 09 | Press to toggle among selectable options within the top/ bottom row Takes you to SETTINGS mode |



WARNING

Inform about the global status of the fixture. The icons are automatically turned on or off depending on the changes the user has made across some specific menu options. When any icon is turned on means that the function is activated (they appear as a colored icon), otherwise the feature is disabled (they appear as a gray icon). The warning icons are GREEN/MAGENTA warning and COLOR LIGHT selected warning

32/56K

By pushing once resets to White Light 3200K, pushing again resets to 5600K and by pushing a third time goes back to the last white light or color setting.

PRESET

Press PRESET button to save or load any white light or color settings combined with zoom.

ZOOM and DIMMER

Changes the beam angle in two ways: Push the top Control Knob to select ZOOM, then turn the knob to precisely adjust the beam angle. Drag with your finger the ZOOM slider to quickly change the beam angle. Push the top Control Knob to select DIMMER, then turn the knob to change the intensity value.

ADJUSTABLE PARAMETERS

the adjustable options will vary depending on the control mode selected. To select any option you can push the bottom Control Knob or simply push over the desired parameter.

COLOR AREA

The color area over the control modes buttons shows a real time emulation of every color adjustment as a visual reference of the light emitted by the fixture.

COLOR MODES

CTT	HSI	RGB	GELS
Zoom Dimmer Kelvin Green/ Magenta	Zoom Intensity Kelvin Saturation Hue	Zoom Intensity Kelvin Saturation Red/ Green/ Blue	Gel Zoom Intensity Kelvin Saturation Red Green Blue

SETTINGS

DMX-RDM		REMOTE CONTROL	
Address		LumenRadio (only KOSMOS LOCATION)	DMX address DMX mode State DMX button
DMX lost behavior	Hold data Go to local		set set unlinked/ connected change address change mode
DMX mode	CTT 8 bit CTT+ HSI 8 bit CTT+ RGB 8 bit RGB+ 8 bit GELS 8 bit CHANGING 8 bit CTT 16 bit CTT+ HSI 16 bit CTT+ RGB 16 bit RGB+ 16 bit GELS 16 bit CHANGING 16 bit	WI-FI	IP MAC RSSI Status GOYA App
		BLUETOOTH	Status GOYA App
		ETHERNET (only KOSMOS STUDIO)	

DIMMING CURVE

Dimming curve	Linear (default) Logarithmic 1 Exponential
---------------	--

FAN

Fan mode	Dynamic Silence Full speed
----------	----------------------------------

ABOUT

Upgrade	System Network
Display timeout	On/ Off

CONTROL OPTIONS

The KOSMOS can be fully, quickly and easily controlled in any possible way, locally or wirelessly, or from your smartphone with VELVET Color App.

LOCAL CONTROL

- On-board control with full color touchscreen plus two rotary knobs.

WIRE CONTROL

- DMX-RDM through XLR-5 in and through connectors
- Art-Net through Ethernet RJ-45 connector (only KOSMOS Studio)

WIRELESS CONTROL

- DMX-RDM with CRMX LumenRadio (only KOSMOS Location)
- Art-Net through Wi-Fi
- Bluetooth

CONTROL PRIORITIES. The following rules whenever you will control KOSMOS fixture through more than one control method:

Wire Art-Net	priority 1
Wire DMX-RDM	priority 2
Wireless LumenRadio DMX-RDM	priority 3
Wireless Wi-fi Art-Net	priority 4
On-board control	priority 5

In case of signal loss you can set the behavior of the fixture.

To set the loss behavior go to DMX or LumenRadio Lost behavior on the Settings menu.

ZOOM/ BEAM ANGLE ADJUSTMENT

You can locally adjust the beam angle in two ways:

- Push the ZOOM button and directly set the beam angle by rotating the top knob.
- For quick settings directly slide the ZOOM slider.

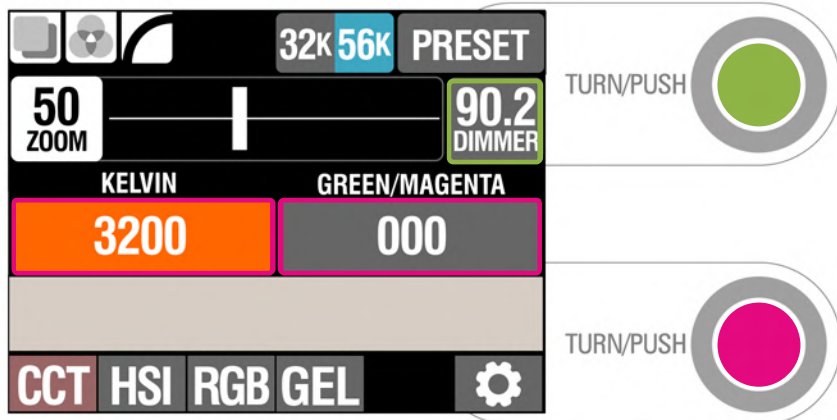
The ZOOM can be adjusted at any moment combined with any control mode.

CCT MODE/ WHITE LIGHT

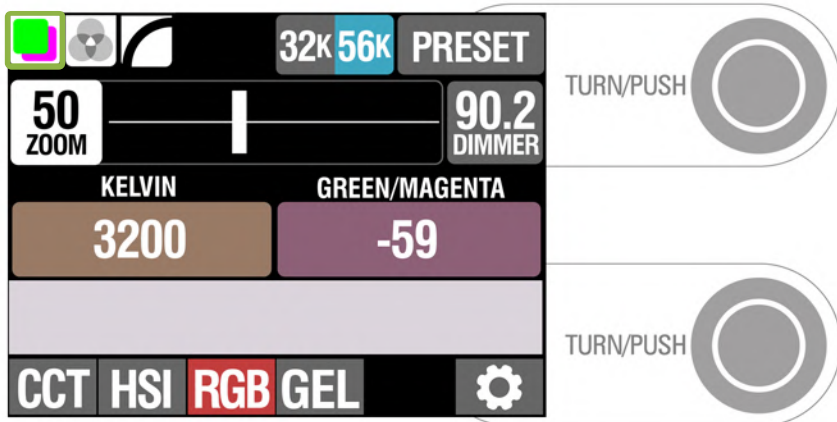
Push DIMMER button and directly set the intensity by rotating the top knob.

Push the KELVIN button and directly set the color temperature value by rotating the bottom knob.

Push the GREEN-MAGENTA button and directly set the correction value by rotating the bottom knob.



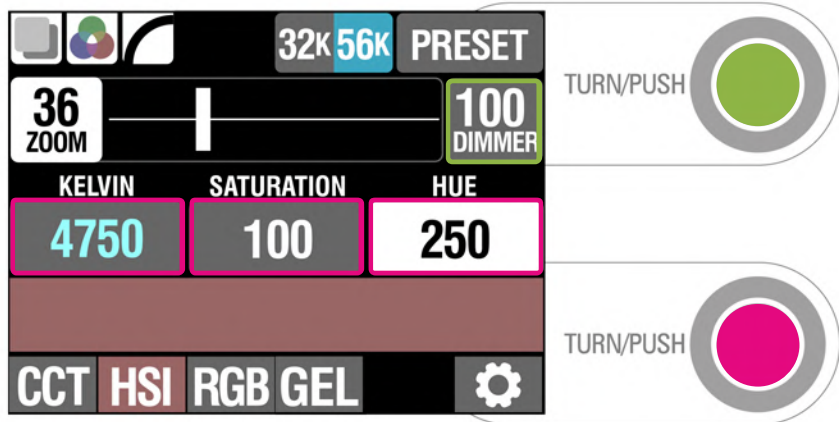
Any time GREEN-MAGENTA will be set out of zero the G/M icon will change to ON as a warning that standard white light is offset



HSI MODE/ COLOR LIGHT

Push DIMMER button and directly set the intensity by rotating the top knob.

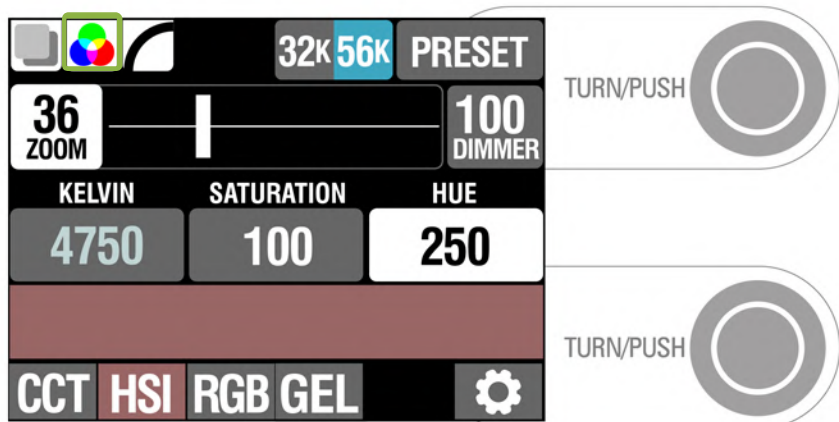
Push the KELVIN, SATURATION or HUE buttons and directly set the desired value by rotating the bottom knob.



NOTES: When the Saturation value is 0 the light emitted by KOSMOS is only white light and therefore HUE will not have any effect.

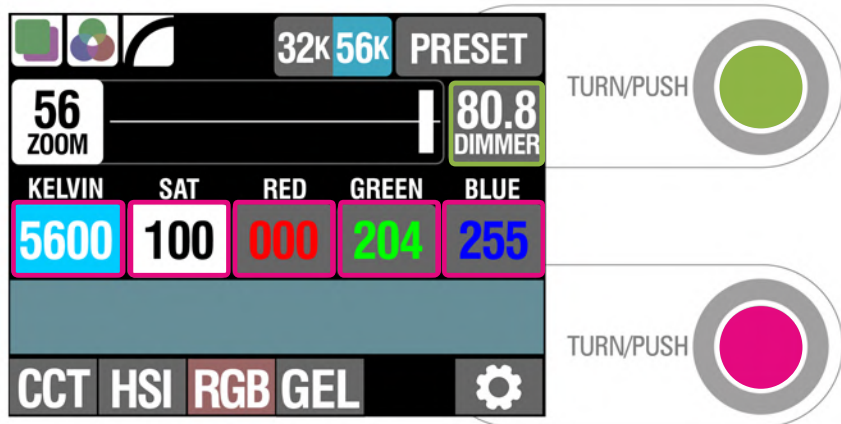
When the Saturation value is between 1 and 100 the light emitted by KOSMOS includes color tint and therefore HUE will be active.

Any time SATURATION will be set out of zero the RGB icon will change to ON as a warning that standard white light is offset



RGB MODE/ COLOR LIGHT

Push DIMMER button and directly set the intensity by rotating the top knob.
 Push the KELVIN, SATURATION or RED, GREEN and BLUE buttons and directly set the desired value by rotating the bottom knob.



NOTES: When the Saturation value is 0 the light emitted by KOSMOS is only white light and therefore RED, GREEN and BLUE will not have any effect.

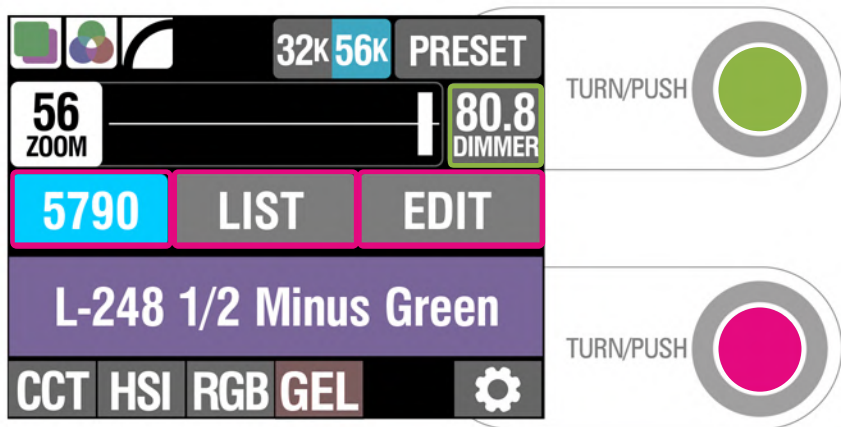
When the Saturation value is between 1 and 100 the light emitted by KOSMOS includes color tint and therefore RED, GREEN and BLUE will be active.

Any time SATURATION will be set out of zero and also RED, GREEN or BLUE will be set out of zero the RGB icon will change to ON as a warning that standard white light is offset

GELS MODE/ COLOR LIGHT

On GEL mode you can easily select any color filter from a wide and user-friendly library.

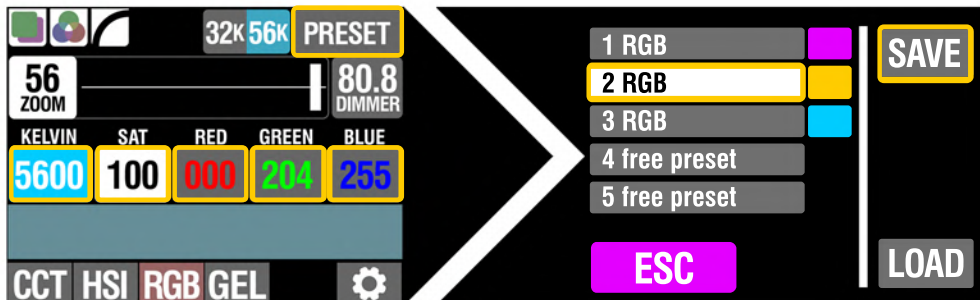
- Sort the filters on alphabetical or on color order.
- Display each filter showing its number, name and also its actual color.
- Set the color temperature of the virtual white light source to 3200K or 5600K.
- Edit and create your own new filter by adjusting: intensity, color temperature from 2500K to 10.000K, saturation, red, green and blue.



TO EDIT a FILTER

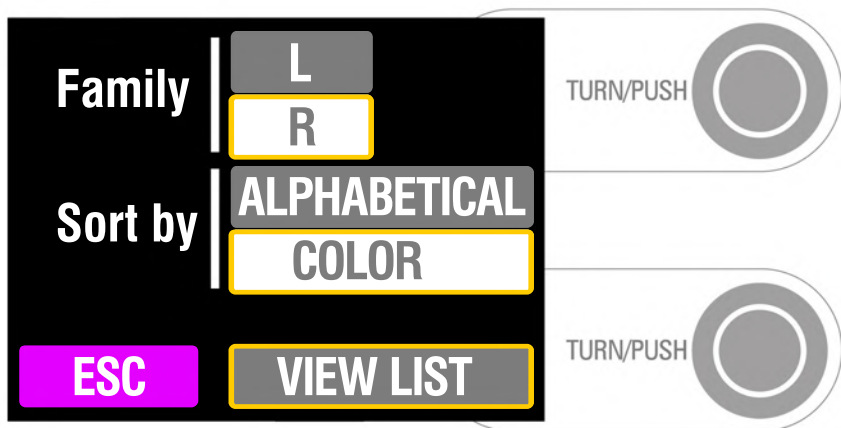
Select a base filter to work on. Press **EDIT** and the display will automatically switches to RGB mode. Modify the Kelvin, Saturation and individual RGB channels.

The result is shown live. Press **PRESET** and the list of PRESETS will be displayed on the screen. Select one and overwrite the preset by pressing **SAVE** and confirm.



GELS MODE/ COLOR LIGHT

Press LIST button lets you choose between L filter library or R filter library and sort the filters library on alphabetical or on color order



 002 Rose Pink	 036 Medium Pink	 102 Light Amber	 127 Smokey Pink
 003 Lavender Tint	 046 Dark Magenta	 103 Straw	 128 Bright Pink
 004 Med.Bastard Amb.	 048 Rose Purple	 104 Deep Amber	 131 Marine Blue
 007 Pale Yellow	 052 Light Lavender	 106 Primary Red	 134 Golden Amber
 008 Dark Salmon	 053 Paler Lavender	 107 Light Rose	 135 Deep Golden Amb.
 009 Pale Amber Gold	 058 Lavender	 108 English Rose	 136 Pale Lavender
 010 Medium Yellow	 061 Mist Blue	 109 Light Salmon	 137 Special Lavender
 013 Straw Tint	 063 Pale Blue	 110 Middle Rose	 138 Pale Green
 017 Surprise Peach	 068 Sky Blue	 111 Dark Pink	 140 Summer Blue
 019 Fire	 075 Evening Blue	 113 Magenta	 142 Pale Violet
 020 Medium Amber	 079 Just Blue	 115 Peacock Blue	 143 Pale Navy Blue
 021 Gold Amber	 085 Deeper Blue	 117 Steel Blue	 144 No Color Blue
 022 Dark Amber	 088 Lime Green	 118 Light Blue	 147 Apricot
 024 Scarlet	 089 Moss Green	 120 Deep Blue	 148 Bright Rose
 025 Sunset Red	 090 Dark Yellow Grn.	 121 L. Green	 151 Gold int
 026 Bright Red	 100 Spring Yellow	 122 Fern Green	 152 Pale Gold
 035 Light Pink	 101 Yellow	 124 Dark Green	 153 Pale Salmon

			
444 1/8 CTS	708 Cool Lavender	730 Liberty Green	776 Nectarine
			
600 Arctic White	709 Electric Lilac	731 Dirty Ice	778 Millennium Gold
			
601 Silver	710 Spir Special Blu	733 Damp Squib	779 Bastard Pink
			
602 Platinum	711 Cold Blue	738 JAS Green	781 Terry Red
			
603 Moonlight White	712 Bedford Blue	742 Bram Brown	789 Blood Red
			
604 Full CT 85	714 Elysian Blue	744 Dirty White	790 Moroccan Pink
			
650 Industry Sodium	715 Cabana Blue	746 Brown	791 Moroccan Frost
			
651 HI Sodium	716 Mikkal Blue	747 Easy White	794 Pretty n Pink
			
652 Urban Sodium	717 Shanklin Frost	748 Seedy Pink	795 Magical Magenta
			
653 LO Sodium	718 Half Shanklin Fr	749 Hampshire Rose	
			
700 Perfect Lavender	719 Colour Wash Blue	750 Durham Frost	
			
701 Provence	720 Durham Daylight	763 Wheat	
			
702 Spec.Pale Lavend	721 Berry Blue	764 Sun Colour Straw	
			
703 Cold Lavender	723 Virgin Blue	765 L. Yellow	
			
704 Lily	724 Ocean Blue	773 Cardbox Amber	
			
705 Lily Frost	725 Old Steel Blue	774 Soft Amber Key 1	
			
706 King Fals Lavend	728 Steel Green	775 Soft Amber Key 2	

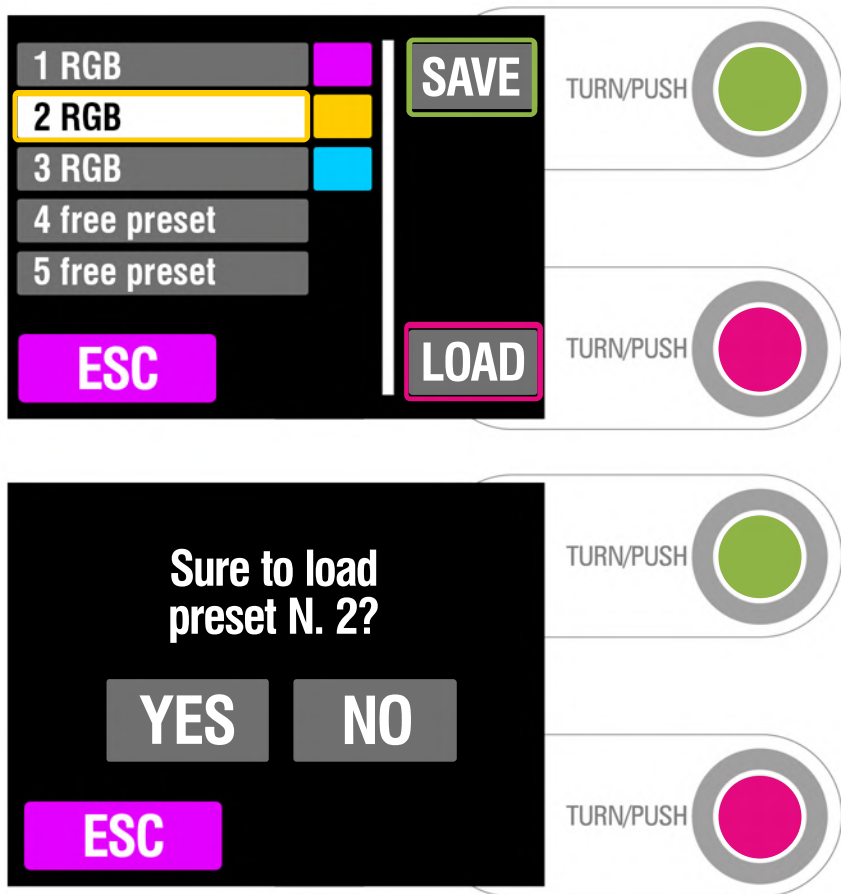
			
			
			
			
			
			
			
			
			
			
			
			
			
			
			
			
			

 3220 Double CTB	 3441 Full CTS	 4515 15 Yellow	 4930 30 Lavender
 3304 Full Plusgreen	 3442 1/2 CTS	 4530 30 Yellow	 4960 60 Lavender
 3308 Full Minusgreen	 3443 1/4 CTS	 4560 60 Yellow	 4990 90 Lavender
 3309 3/4 Minusgreen	 3444 1/8 CTS	 4590 90 Yellow	
 3310 Fluorofilter	 4215 15 Blue	 4615 15 Red	
 3313 1/2 Minusgreen	 4230 30 Blue	 4630 30 Red	
 3314 1/4 Minusgreen	 4260 60 Blue	 4660 60 Red	
 3315 1/2 Plusgreen	 4290 90 Blue	 4690 90 Red	
 3316 1/4 Plusgreen	 4307 7 Cyan	 4715 15 Magenta	
 3317 1/8 Plusgreen	 4315 15 Cyan	 4730 30 Magenta	
 3318 1/8 Minusgreen	 4330 30 Cyan	 4760 60 Magenta	
 3407 Full CTO	 4360 60 Cyan	 4790 90 Magenta	
 3408 1/2 CTO	 4390 90 Cyan	 4815 15 Pink	
 3409 1/4 CTO	 4415 15 Green	 4830 30 Pink	
 3410 1/8 CTO	 4430 30 Green	 4860 60 Pink	
 3411 3/4 CTO	 4460 60 Green	 4890 90 Pink	
 3420 Double CTO	 4490 90 Green	 4915 15 Lavender	

PRESET

KOSMOS allows to save any white light or color settings from any color mode including the Zoom setting.

- A total of ten user presets can be saved.
- Each preset is displayed showing its number, color mode and also its actual color.
- Scroll along the preset library using any of the two rotary knobs.



DMX-RDM CONTROL

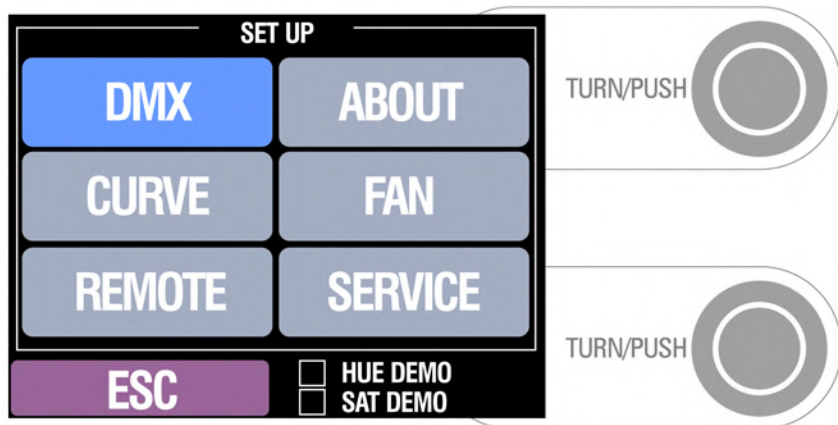
The KOSMOS offers ten DMX control Modes on 8-bit and ten more on 16-bit. Use the 8-bit modes with basic controllers like dimmer consoles. The DMX mode can be selected on the KOSMOS settings menu.

The control mode named “Changing mode” allow to dynamically and remotely change the DMX mode through a DMX console by changing the channel 2 value on 8-bit or channel 3 value on 16-bit. Please refer to “DMX Map chart 8-bit” and “DMX Chart 16-bit”.

The 16-bit modes use two channels for the intensity parameter and provide higher resolution compared to the 8-bit modes. One channel sets the coarse value between 0 and 255 of the function while each step is divided in 256 increments using the fine channel.

DMX ADDRESS

To set the DMX Address push  and then push the DMX button.



DMX ADDRESS

To set the DMX Address directly set it by rotating the top control knob.

DMX MODE

KOSMOS offers a choice of different DMX modes on 8 bit and on 16 bit.

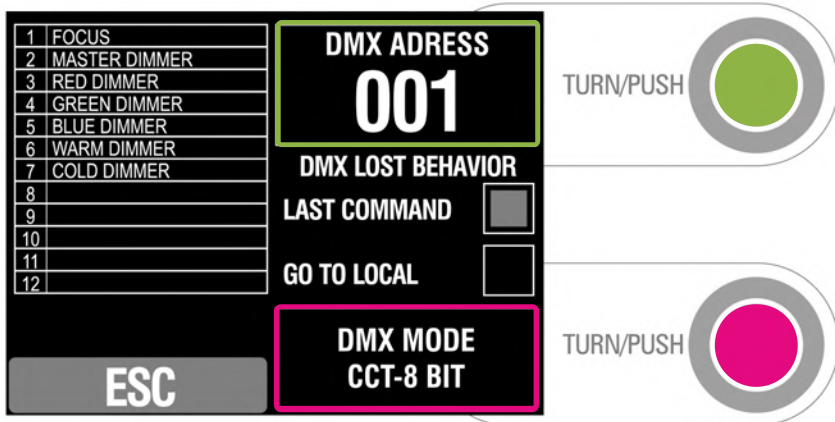
To set the DMX Mode push and then push the DMX button. Then you can select the DMX mode rotating the bottom control knob.

The screen will show you the DMX Map channels according to the selected DMX mode.

DMX LOSS BEHAVIOR

To set the behavior of the fixture when the DMX control signal is lost push . Then push the DMX button. Now you can directly tap on the preferred lost behavior option:

- Last Command The last received DMX command is used until the fixture is switched off or a valid DMX data is received
- LED Off The fixture sets the light intensity to 0.



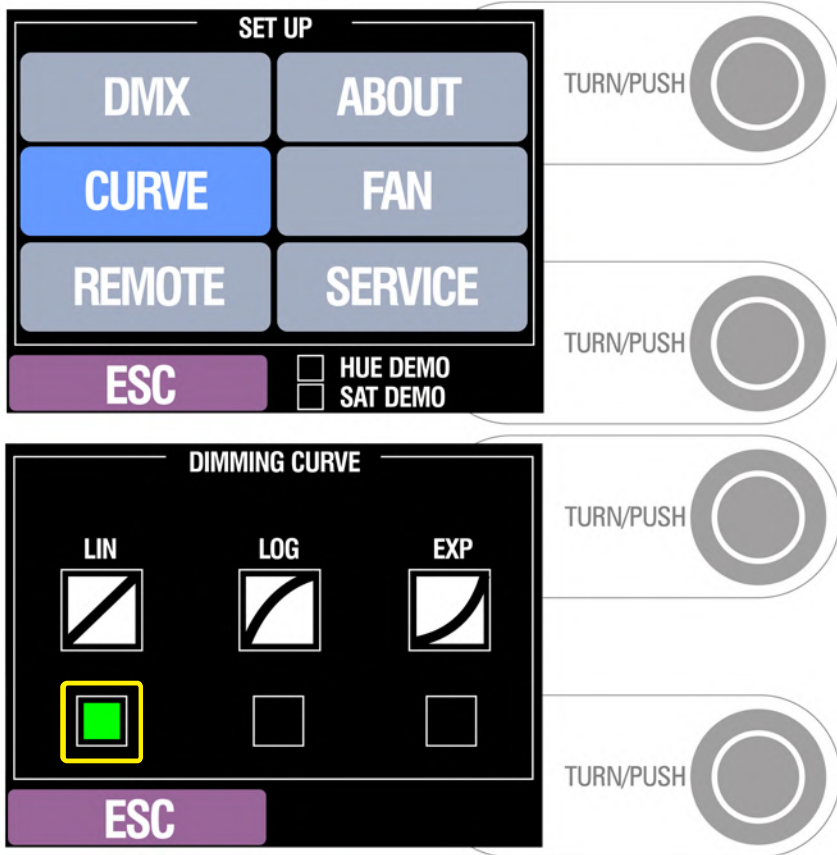
CCT mode	1 MASTER INTENSITY Values: 0-255 Percent: 0-100	2 KELVIN 2500K-10.0K Values: 0-255 Percent: 0-100	3 GREEN/MAG 100M-100G Value 0: Neutral Value 1-121: 100M to 1M Value 122-132: Neutral Zone Value 133-255: 1G to 100G	4 ZOOM Values: 0-255 Percent: 0-100	5 FAN Values: 0-255 Selects mode every 10 Dmx steps	6	7	8	9	10
CCT & HSI mode	1 MASTER INTENSITY Values: 0-255 Percent: 0-100	2 KELVIN 2500K-10.0K Values: 0-255 Percent: 0-100	3 GREEN/MAG 100M-100G Value 0: Neutral Value 1-121: 100M to 1M Value 122-132: Neutral Zone Value 133-255: 1G to 100G	4 SATURATION Values: 0-255 Percent: 0-100	5 HUE 0-359 DEGREES Values: 0-255 Percent: 0-100	6 ZOOM Values: 0-255 Percent: 0-100	7 FAN Values: 0-255 Selects mode every 10 Dmx steps	8	9	10
CCT & RGB mode	1 MASTER INTENSITY Values: 0-255 Percent: 0-100	2 KELVIN 2500K-10.0K Values: 0-255 Percent: 0-100	3 GREEN/MAG 100M-100G Value 0: Neutral Value 1-121: 100M to 1M Value 122-132: Neutral Zone Value 133-255: 1G to 100G	4 SATURATION Values: 0-255 Percent: 0-100	5 RED	6 GREEN	7 BLUE	8 ZOOM Values: 0-255 Percent: 0-100	9 FAN Values: 0-255 Selects mode every 10 Dmx steps	10
RGB mode	1 MASTER INTENSITY Values: 0-255 Percent: 0-100	2 RED	3 GREEN	4 BLUE	5 WHITE	6 COLD WHITE	7 ZOOM Values: 0-255 Percent: 0-100	8 FAN Values: 0-255 Selects mode every 10 Dmx steps	9	10
Gels Mode	1 MASTER INTENSITY Values: 0-255 Percent: 0-100	2 KELVIN 2500K-10.0K Values: 0-255 Percent: 0-100	3 Family (R, L) Value 0-127 = R Value 128-255 = Lfamily(R, L) Value 0-127 = R Value 128-255 = L	4 GEL NUMBER Values: 0-255 Percent: 0-100	5 RESERVED FOR FUTURE USE	6 ZOOM Values: 0-255 Percent: 0-100	7 FAN Values: 0-255 Selects mode every 10 Dmx steps	8	9	10
PRESETS mode	1 MASTER INTENSITY Value 0 = Intensity as per Preset Values 1-255 = sets intensity (overriding preset)	2 Family (R, L) Value 0-127 = R Value 128-255 = Lfamily(R, L) Value 0-127 = R Value 128-255 = L	3 PRESET NUMBER Values = 0 - 255 Preset changes every 10 values: 0 - 9 = Preset 1 10 - 19 = Preset 2 20 - 39 = ...	4	5	6	7	8	9	10
EFFECT mode										
RESERVED FUTURE										
RESERVED FUTURE										
Changing Mode CCT	1 MASTER INTENSITY Values: 0-255 Percent: 0-100	2 MODE 0-9: CCT	3 KELVIN 2500K-10.0K Values: 0-255 Percent: 0-100	4 GREEN/MAG 100M-100G Value 0: Neutral Value 1-121: 100M to 1M Value 122-132: Neutral Zone Value 133-255: 1G to 100G	5 ZOOM Values: 0-255 Percent: 0-100	6 FAN Values: 0-255 Selects mode every 10 Dmx steps	7	8	9	10
Changing Mode CCT + HSI	1 MASTER INTENSITY Values: 0-255 Percent: 0-100	2 MODE 10-19: CCT & HSI	3 KELVIN 2500K-10.0K Values: 0-255 Percent: 0-100	4 GREEN/MAG 100M-100G Value 0: Neutral Value 1-121: 100M to 1M Value 122-132: Neutral Zone Value 133-255: 1G to 100G	5 SATURATION Values: 0-255 Percent: 0-100	6 HUE 0-359 DEGREES Values: 0-255 Percent: 0-100	7 ZOOM Values: 0-255 Percent: 0-100	8 FAN Values: 0-255 Selects mode every 10 Dmx steps	9	10
Changing mode CCT + RGB	1 MASTER INTENSITY Values: 0-255 Percent: 0-100	2 MODE 20-29: CCT & RGB	3 KELVIN 2500K-10.0K Values: 0-255 Percent: 0-100	4 GREEN/MAG 100M-100G Value 0: Neutral Value 1-121: 100M to 1M Value 122-132: Neutral Zone Value 133-255: 1G to 100G	5 SATURATION Values: 0-255 Percent: 0-100	6 RED	7 GREEN	8 BLUE	9 ZOOM Values: 0-255 Percent: 0-100	10 FAN Values: 0-255 Selects mode every 10 Dmx steps
Changing mode GEL	1 MASTER INTENSITY Values: 0-255 Percent: 0-100	2 MODE 30-39: Gels	3 KELVIN 2500K-10.0K Values: 0-255 Percent: 0-100	4 Family (R, L) Value 0-127 = R Value 128-255 = Lfamily(R, L) Value 0-127 = R Value 128-255 = L	5 GEL NUMBER Values: 0-255 Percent: 0-100	6 RESERVED FOR FUTURE USE	7 ZOOM Values: 0-255 Percent: 0-100	8 FAN Values: 0-255 Selects mode every 10 Dmx steps	9	10
Changing Mode UNUSED										
Changing Mode PRESET	1 MASTER INTENSITY Values: 0-255 Percent: 0-100	2 MODE 50-59: Presets	3 PRESET NUMBER Values: 0-255	4 FAN Values: 0-255 Selects mode every 10 Dmx steps	5	6	7	8	9	10
Changing Mode EFFECTS UNUSED										
Changing Mode RGBWW	1 MASTER INTENSITY Values: 0-255 Percent: 0-100	2 MODE 70-79: RGB +	3 RED	4 GREEN	5 BLUE	6 WHITE	7 COLD WHITE	8 ZOOM Values: 0-255 Percent: 0-100	9 FAN Values: 0-255 Selects mode every 10 Dmx steps	10

	1	2	3	4	5	6	7	8	9	10	11	
CCT mode	MASTER INTENSITY COARSE Values: 0-255 Percent: 0-100	MASTER INTENSITY FINE Values: 0-255 Percent: 0-100	KELVIN 2500K-10.0K Values: 0-255 Percent: 0-100	GREEN/MAG 100M-100G Value 0: Neutral Value 1-121: 100M to 1M Value 122-132: Neutral Zone Value 133-255: 1G to 100G	ZOOM Values: 0-255 Percent: 0-100	FAN Values: 0-255 Selects mode every 10 Dmx steps						
CCT & HSI mode	MASTER INTENSITY COARSE Values: 0-255 Percent: 0-100	MASTER INTENSITY FINE Values: 0-255 Percent: 0-100	KELVIN 2500K-10.0K Values: 0-255 Percent: 0-100	GREEN/MAG 100M-100G Value 0: Neutral Value 1-121: 100M to 1M Value 122-132: Neutral Zone Value 133-255: 1G to 100G	SATURATION Values: 0-255 Percent: 0-100	HUE 0-359 DEGREES Values: 0-255 Percent: 0-100	ZOOM Values: 0-255 Percent: 0-100	FAN Values: 0-255 Selects mode every 10 Dmx steps				
CCT & RGB mode	MASTER INTENSITY COARSE Values: 0-255 Percent: 0-100	MASTER INTENSITY FINE Values: 0-255 Percent: 0-100	KELVIN 2500K-10.0K Values: 0-255 Percent: 0-100	GREEN/MAG 100M-100G Value 0: Neutral Value 1-121: 100M to 1M Value 122-132: Neutral Zone Value 133-255: 1G to 100G	SATURATION Values: 0-255 Percent: 0-100	RED	GREEN	BLUE	ZOOM Values: 0-255 Percent: 0-100	FAN Values: 0-255 Selects mode every 10 Dmx steps		
RGB mode	MASTER INTENSITY COARSE Values: 0-255 Percent: 0-100	MASTER INTENSITY FINE Values: 0-255 Percent: 0-100	RED	GREEN	BLUE	WHITE	COLD WHITE	ZOOM Values: 0-255 Percent: 0-100	FAN Values: 0-255 Selects mode every 10 Dmx steps			
Gels Mode	MASTER INTENSITY COARSE Values: 0-255 Percent: 0-100	MASTER INTENSITY FINE Values: 0-255 Percent: 0-100	KELVIN 2500K-10.0K Values: 0-255 Percent: 0-100	Family (R, L) Value 0-127 = R Value 128-255 = L Value 0-127 = R Value 128-255 = L	GEL NUMBER Values: 0-255 Percent: 0-100	RESERVED FOR FUTURE USE	ZOOM Values: 0-255 Percent: 0-100	FAN Values: 0-255 Selects mode every 10 Dmx steps				
PRESETS mode	MASTER INTENSITY COARSE Values: 0-255 Percent: 0-100	MASTER INTENSITY FINE Values: 0-255 Percent: 0-100	PRESET NUMBER Values = 0-255 Preset changes every 10 values: 0 - 9 = Preset 1 10 - 19 = Preset 2 20 - 39 = ...	FAN Values: 0-255 Selects mode every 10 Dmx steps								
EFFECT mode												
RESERVED FUTURE												
RESERVED FUTURE												
Changing Mode CCT	MASTER INTENSITY COARSE Values: 0-255 Percent: 0-100	MASTER INTENSITY FINE Values: 0-255 Percent: 0-100	MODE 0-9: CCT	KELVIN 2500K-10.0K Values: 0-255 Percent: 0-100	GREEN/MAG 100M-100G Value 0: Neutral Value 1-121: 100M to 1M Value 122-132: Neutral Zone Value 133-255: 1G to 100G	ZOOM Values: 0-255 Percent: 0-100	FAN Values: 0-255 Selects mode every 10 Dmx steps					
Changing Mode CCT + HSI	MASTER INTENSITY COARSE Values: 0-255 Percent: 0-100	MASTER INTENSITY FINE Values: 0-255 Percent: 0-100	MODE 10-19: CCT & HSI	KELVIN 2500K-10.0K Values: 0-255 Percent: 0-100	GREEN/MAG 100M-100G Value 0: Neutral Value 1-121: 100M to 1M Value 122-132: Neutral Zone Value 133-255: 1G to 100G	SATURATION Values: 0-255 Percent: 0-100	HUE 0-359 DEGREES Values: 0-255 Percent: 0-100	ZOOM Values: 0-255 Percent: 0-100	FAN Values: 0-255 Selects mode every 10 Dmx steps			
Changing mode CCT + RGB	MASTER INTENSITY COARSE Values: 0-255 Percent: 0-100	MASTER INTENSITY FINE Values: 0-255 Percent: 0-100	MODE 20-29: CCT & RGB	KELVIN 2500K-10.0K Values: 0-255 Percent: 0-100	GREEN/MAG 100M-100G Value 0: Neutral Value 1-121: 100M to 1M Value 122-132: Neutral Zone Value 133-255: 1G to 100G	SATURATION Values: 0-255 Percent: 0-100	RED	GREEN	BLUE	ZOOM Values: 0-255 Percent: 0-100	FAN Values: 0-255 Selects mode every 10 Dmx steps	
Changing mode GEL	MASTER INTENSITY COARSE Values: 0-255 Percent: 0-100	MASTER INTENSITY FINE Values: 0-255 Percent: 0-100	MODE 30-39: Gels	KELVIN 2500K-10.0K Values: 0-255 Percent: 0-100	Family (R, L) Value 0-127 = R Value 128-255 = L Value 0-127 = R Value 128-255 = L	GEL NUMBER Values: 0-255 Percent: 0-100	RESERVED FOR FUTURE USE	ZOOM Values: 0-255 Percent: 0-100	FAN Values: 0-255 Selects mode every 10 Dmx steps			
Changing Mode UNUSED												
Changing Mode PRESET	MASTER INTENSITY COARSE Values: 0-255 Percent: 0-100	MODE 50-59: Presets	PRESET NUMBER Values: 0-255	FAN Values: 0-255 Selects mode every 10 Dmx steps								
Changing Mode UNUSED												
Changing Mode RGBWW	MASTER INTENSITY COARSE Values: 0-255 Percent: 0-100	MASTER INTENSITY FINE Values: 0-255 Percent: 0-100	MODE 70-79: RGB +	RED	GREEN	BLUE	WHITE	COLD WHITE	ZOOM Values: 0-255 Percent: 0-100	FAN Values: 0-255 Selects mode every 10 Dmx steps		

DIMMING CURVE

The dimming curve is the correlation between the change in the value of the dimming control and the actual change in the fixture's light intensity. Curve is also the extent to which the fixture delays its response time to the control signal in order to smooth dimming.

To set the Dimming Curve of the fixture push and then push the CURVE button.



LINEAR (default)

Brightness levels correlate exactly with the value of the dimming control. Moderate lag in response for good dimming smoothness. Linear allows quick jumps in brightness.

LOGARITHMIC

The resolution is low at lower intensity levels and high at higher intensity levels. Use this dimming curve when you need a high resolution at high intensity levels.

EXPONENTIAL

The resolution is high at lower intensity levels and low at higher intensity levels. It provides moderate lag in response for good smoothness and allows quick jumps in brightness. Suitable for most applications. Use this dimming curve when you need a high resolution at low intensity levels.

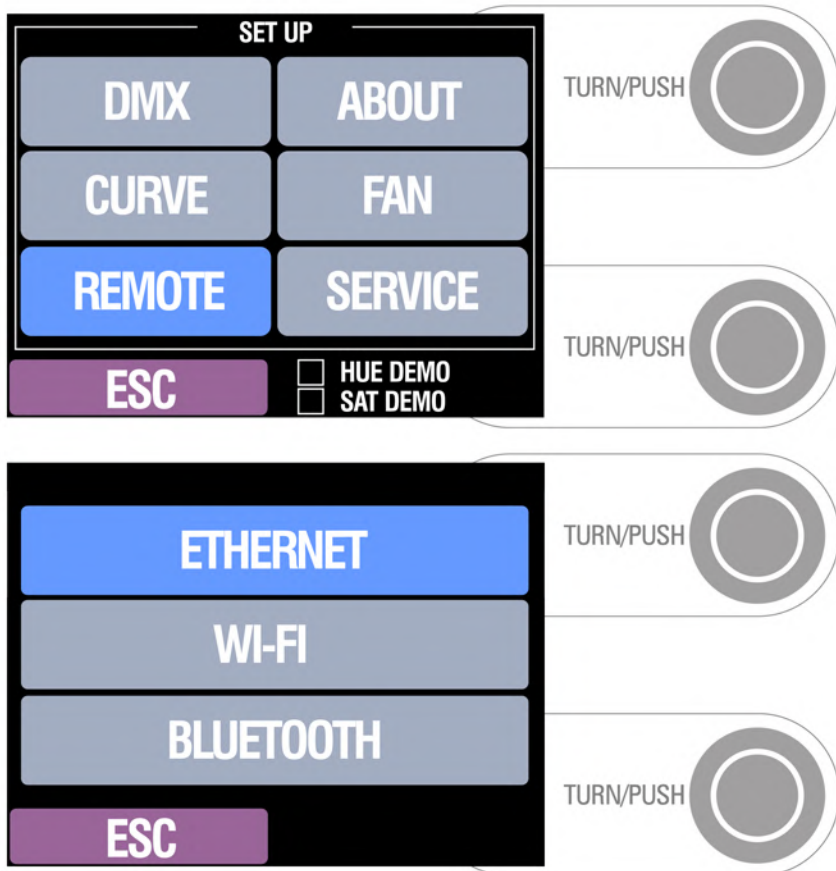
REMOTE CONTROL

- Ethernet Art-Net (exclusively on KOSMOS STUDIO)
- On the KOSMOS Location you have wireless Art-Net control through VELVET Wi-Fi.
- On the KOSMOS Studio you have two Art-Net* control options:
 - Wire control through Ethernet RJ-45 connector
 - Wireless control through Wi-Fi

*Art-Net™ Designed by and Copyright Artistic Licence Holdings Ltd is a network protocol to control devices. For more detailed information, please visit the site of the Art-Net developers www.artisticlicence.com

ETHERNET

Push  and push the REMOTE button. Select "ETHERNET"



The Ethernet function shows the following information:

IP mode	DHCP / 2.x.x.x / 10.x.x.x
Connection status	Connected / Unconnected
IP	when KOSMOS is connected to a network it shows the fixture IP address
MAC	when KOSMOS is connected to a network it shows the fixture MAC address

To set the IP mode push the IP mode button to select the mode and then push APPLY.

IP MODES

DHCP The IP address is automatically assigned to the fixture by the network.

2.x.x.x mode to set up the fixture in an Art-Net network

10.x.x.x mode to set up the fixture in an Art-Net network

NOTE: As soon as a wired signal is detected via the other interface (DMX-512A through XLR-5 connector), any wire Art-Net data will be ignored and the KOSMOS will only process the DMX wired command.

WIRELESS CONTROL

The KOSMOS CPU includes a highly advanced hardware with a dedicated software to offer the user full wireless control.

ON KOSMOS LOCATION

- DMX-RDM through LumenRadio CRMX
- Wi-Fi Art-Net to control from Smartphone or tablet with VELVET GOYA* free App or any third party device or App.
- Bluetooth control from Smartphone or tablet with VELVET GOYA* free App or any third party device or App.

ON KOSMOS STUDIO

- Wi-Fi Art-Net to control from Smartphone or tablet with VELVET GOYA* free App or any third party device or App.
- Bluetooth control from Smartphone or tablet with VELVET GOYA* free App or any third party device or App.

VELVET Goya App is available free of charge for Android and iOS.

Using a Smartphone or tablet with VELVET Goya App you get full, intuitive control.

Wi-Fi Art-Net

Every KOSMOS fixture is equipped with a Wi-Fi Art-Net* system to wirelessly control the fixture.

*Art-Net™ Designed by and Copyright Artistic Licence Holdings Ltd is a network protocol to control devices. For more detailed information, please visit the site of the Art-Net developers www.artisticlicence.com.

TO LINK the KOSMOS with ANY WI-FI DEVICE LIKE

Smartphone, tablet or computer it is mandatory to use a VELVET Router (ref. VE-ROUTER) or alternatively any Wi-Fi router in which you need to change the SSID and password to make it compatible with KOSMOS.

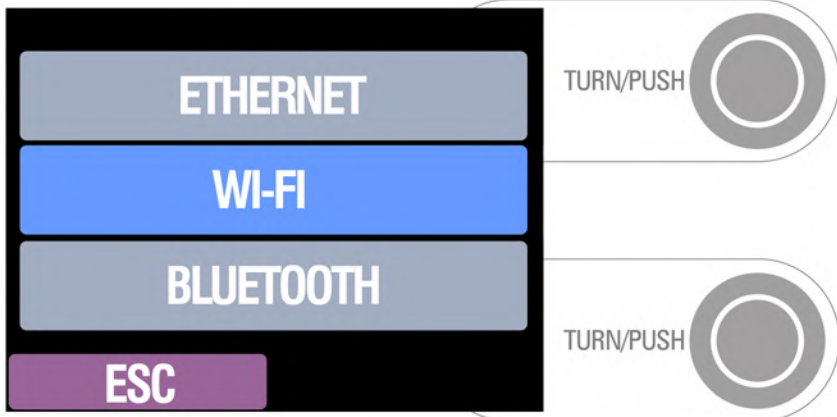


If you want to use your own router you need to configure it with these credentials:
SSID: VELVET Router/ Password: velvetrouter

The KOSMOS can be linked to any Wi-Fi device through the Wi-Fi Router if there is no DMX signal received via a wired interface (DMX-512A through XLR-5 connector or Art-Net through Ethernet connector) or via wireless DMX LumenRadio and Wi-Fi is activated via the fixture menu.

TO ACTIVATE WI-FI

Push and push the REMOTE button. Select "WI-FI". The fixture will now automatically connect to any available VELVET Router.



Once Wi-Fi is activated the color display will show the following information:

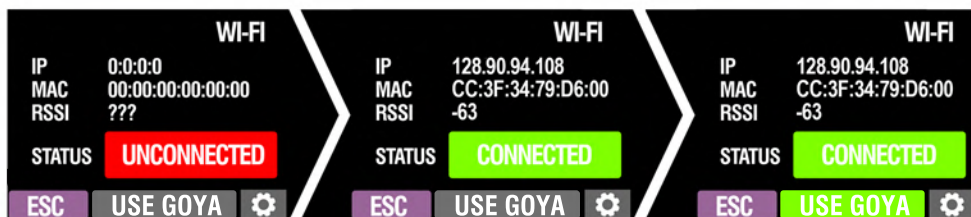
IP address	
MAC	
RSSI	
Status	Connected/ Disconnect

CONTROL with VELVET GOYA App

Push the button USE GOYA to activate the function so that the button turns into green.

CONTROL with THIRD PARTY DEVICE or SOFTWARE

Deactivate the USE GOYA function (the button turns into grey) and push the SETTINGS button. Push DMX button and select the DMX address and DMX mode. Finally push ESC two times to go back to Wi-Fi mode.



TO DISACTIVATE WI-FI

Push **ESC** to exit from the Wi-Fi screen and the KOSMOS will no longer react to Wi-Fi commands.

NOTE: As soon as a wired signal is detected via the other interfaces (DMX-512A through XLR-5 connector or Art-Net through Ethernet connector) any Wi-Fi data will be ignored and the KOSMOS only processes the wired DMX/RDM signal or the Ethernet.

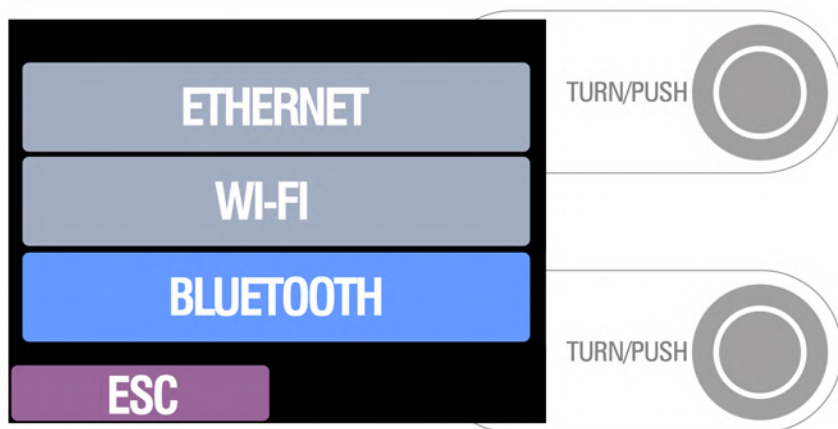
BLUETOOTH

Every KOSMOS is equipped with a Bluetooth system to wirelessly control the fixture.

The KOSMOS can be linked to any Bluetooth device if there is no DMX signal received via a wired interface (DMX-512A through XLR-5 connector or Art-Net through Ethernet connector) and Bluetooth is activated via the fixture menu.

TO ACTIVATE BLUETOOTH

Push **Settings** and push the REMOTE button. Select "BLUETOOTH". The fixture can now be detected by any Bluetooth device.

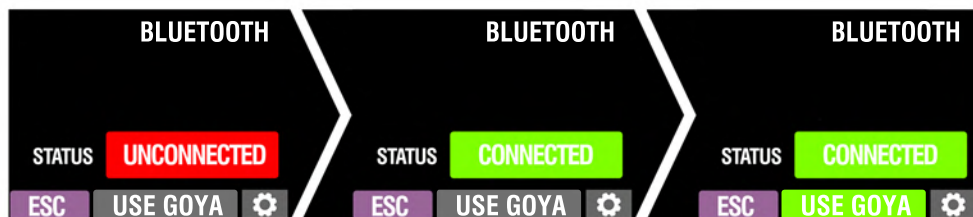


CONTROL with VELVET GOYA App

Push the button USE GOYA to activate the function so that the button turns into green.

CONTROL with THIRD PARTY DEVICE or SOFTWARE

Disactivate the USE GOYA function (the button turns into grey) and push the SETTINGS button. Push DMX button and select the DMX address and DMX mode. Finally push ESC two times to go back to BLUETOOTH mode.



TO DISACTIVATE BLUETOOTH

Push **ESC** to exit from the BLUETOOTH screen and the KOSMOS will no longer react to Wi-Fi commands.

NOTE: As soon as a wired signal is detected via the other interfaces (DMX-512A through XLR-5 connector or Art-Net through Ethernet connector) any Wi-Fi data will be ignored and the KOSMOS only processes the wired DMX/RDM signal or the Ethernet.

VELVET GOYA App

Lets you remotely control any KOSMOS as well as any EVO from any smartphone or tablet (Android or iOS) through two compatible ways:

- Wi-Fi to control unlimited number of fixtures up to 100 meters/ 330 feet distance through a VELVET Router (sold separately).
- BLUETOOTH to directly control up to 4 fixtures from up to 30 meters / 100 feet distance

The App automatically discovers any available KOSMOS or EVO fixture and offers full control with its attractive and intuitive interface.

VELVET Goya offers two control options:

- SINGLE CONTROL is a quick and easy interface to control single KOSMOS or EVO fixtures, create and save your own white light, color setting or gels.
- PROJECTS is an advanced control to create off-line or on-line lighting projects and scenes using unlimited number of KOSMOS and EVO fixtures.

You can easily adjust, create and save your white or color light in several intuitive modes:

- CTT with Intensity/ Kelvin 2500K-10,000K / Green/Magenta
- HSI+ with Hue color wheel / Saturation / Intensity over any white base from 2500K-10,000K
- RGB+ with RED / GREEN / BLUE / WHITE / COLD WHITE / Intensity master
- GELS with a wide catalog of Gels / Light Sources and Presets to save your own gels created from any of the modes.

The ZOOM (beam angle control) can be adjusted at any moment combined with any control mode.

Using PROJECTS you can work both on-line or off-line to easily create your light designs and scenes. You can group light fixtures, display and move them over your set, rename them or add new lights. You will immediately identify the KOSMOS and EVO models by their shape while their actual color will always be visible.

CONNECTING KOSMOS with VELVET GOYA App THROUGH WI-FI

Link the KOSMOS with any Wi-Fi device like smartphone, tablet or computer it is mandatory to use a VELVET automatic Router (ref. VE-ROUTER) or alternatively any Wi-Fi router in which you need to change the SSID and password to make them compatible with KOSMOS.

- Place the VELVET Router on a stable surface, clear of obstructions. It is recommended to place the device elevated above nearby objects and people to minimize physical interference.
- Power on the VELVET Router through the 12V DC power supply. A blue indicator will light on.
- Wait around 30 seconds until the blue Wi-fi indicator get solid.
- Power on KOSMOS and activate its Wi-Fi function.
- Power on your smartphone or tablet.
- Select the Wi-Fi network named "VELVET Router"
- Enter the PASSWORD "velvetrouter". If your smartphone or tablet shows a message warning you have not internet access then select "No internet"
- Open VELVET Goya App, select either SINGLE CONTROL or PROJECTS and push the Wi-Fi icon to discover the available KOSMOS fixtures.

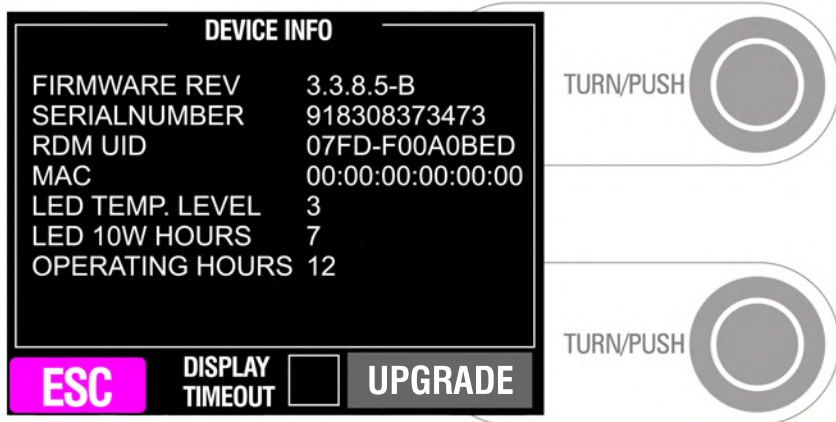
CONNECTING KOSMOS with GOYA App THROUGH BLUETOOTH

- Power on KOSMOS and activate its BLUETOOTH function.
- Power on your smartphone or tablet.
- Enable your Smartphone or tablet Bluetooth.
- Open VELVET Goya App, select either SINGLE CONTROL or PROJECTS and push the BLUETOOTH icon to discover the available KOSMOS fixtures.

IMPORTANT NOTE: to avoid interferences you must disconnect any third smartphones, tablets or computers from the VELVET Router while using VELVET Goya App.

ABOUT

Shows fixture model, fixture serial number, firmware version, RDM ID, Ethernet ID MAC, fixture temperature and LED running hours.



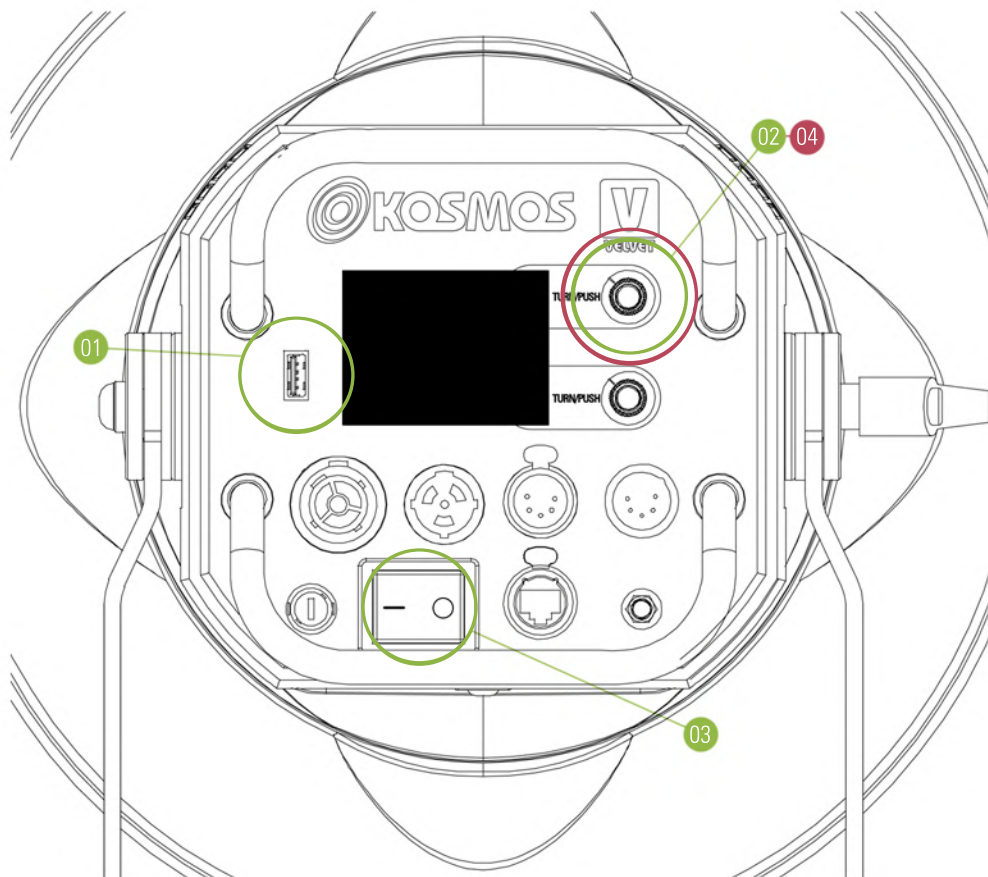
TO UPDATE THE FIRMWARE

On the touchscreen push  and select "ABOUT". On the sub-menu select UPGRADE.

To update the System Firmware push SYSTEM and follow the instructions written on the screen.

Copy the KOSMOS update file to the root of an USB memory stick

- 01 Connect the USB memory stick to the USB connector of the KOSMOS back panel.
- 02 Push the top knob and keep it pressed
- 03 Power on the KOSMOS. The KOSMOS will automatically start the update process
- 04 Now you can release the top knob. Once the firmware update process is finished the KOSMOS will reboot with the new firmware.and remove your USB memory stick



A visual inspection should be conducted before every use, and an inspection of electrical safety should be conducted at least once every 12 months.

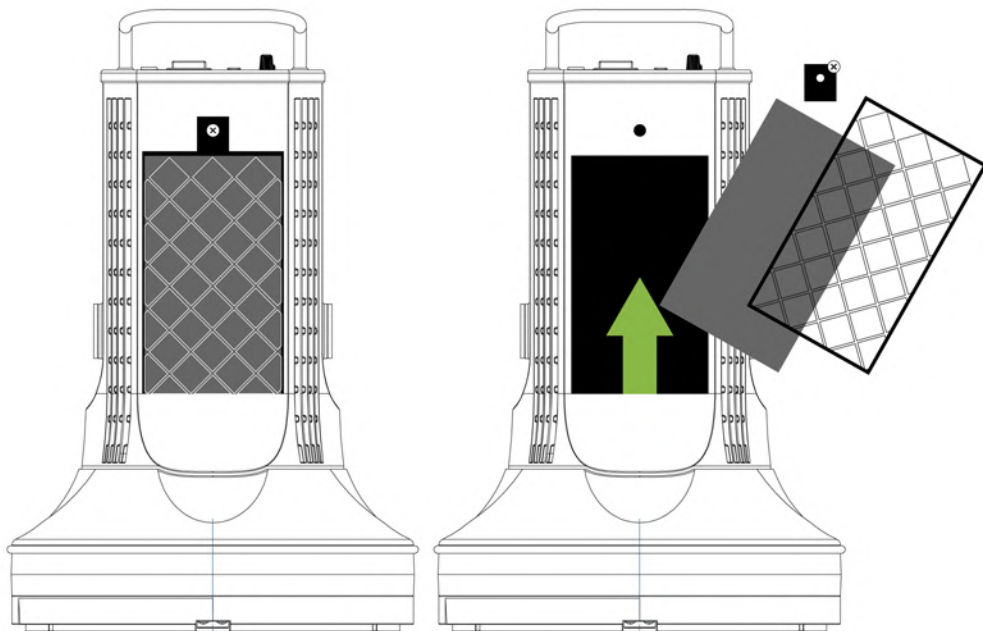
Do not clean the fixture with solvents or strong detergents.

Clean the product with a soft cloth wetted with a mild detergent. Do not rub the surface: lift stuck particles off with a soft repeated press.

KOSMOS fixture require very little routine maintenance, if any. The cooling fan and electronics are protected by a special filter to refrain dust to enter into the fixture.

HOW to CLEAN the FAN FILTER and the KOSMOS from INSIDE

- Disconnect the fixture from power and allow it to cool for some minutes.
- Remove the fan filter from the bottom of the fixture by removing its locking screw.
- Clean the filter using a vaccum cleaner.
- Clean the glass Fresnel lens with a soft damp cloth.
- Very gently clean the LED light engine lens and reflector with Isopropyl alcohol.
- Clean electric contacts with cotton swabs wetted with Isopropyle alcohol.
- Keep electric contacts clean and replace corroded parts.



EC-DECLARATION of CONFORMITY

Brand Name: VELVETLight

Product Description: LED Luminaire systems for professional use

KOSMOS 200 Studio, KOSMOS 200 Location, KOSMOS 400 Studio, KOSMOS 400 Location

The above products abide by the following European Directives:

DIRECTIVE 2014/30/EU of the European Parliament and of the Council of 26 February 2014 on the harmonization of the laws of the Member States relating to electromagnetic compatibility.

DIRECTIVE 2014/35/EU of the European Parliament and of the Council of 26 February 2014 on the harmonization of the laws of the Member States relating to the making available on the market of electrical equipment designed for use within certain voltage limits.

DIRECTIVE 2001/95/EC of the European Parliament and the Council of 3 December 2001 on general product safety

DIRECTIVE 2011/65/EU of the European Parliament and of the Council of 8 June 2011 on the restriction of the use of certain hazardous substances in electrical and electronic equipment.

In compliance with the harmonized standards:

IEC 60598-1:2014 Luminaires – Part 1: General requirements and tests

IEC 60598-1-17:2017 Luminaires – Part 2-17: Particular requirements – Luminaires for stage lighting, television and film studios (outdoor and indoor)

IEC 62031:2008/A1:2012 LED modules for general lighting - Safety specifications

IEC 61547:2009 Equipment for general lighting purposes - EMC immunity requirements

IEC 61000-6-1:2005 Electromagnetic compatibility (EMC) -- Part 6-1: Generic standards - Immunity for residential, commercial and light-industrial environments

IEC 61000-6-3:2006/A1:2010 Electromagnetic compatibility (EMC) - Part 6-3: Generic standards - Emission standard for residential, commercial and light-industrial environments

IEC 61000-6-4:2006/A1:2010 Electromagnetic compatibility (EMC) -- Part 6-4: Generic standards - Emission standard for industrial environments

EN 301489-1 V1.8.1 Electromagnetic compatibility and Radio spectrum Matters (ERM); Electromagnetic Compatibility (EMC) standard for radio equipment and services; Part 1: Common technical requirements

IEC 62493:2009 Assessment of lighting equipment related to human exposure to electromagnetic fields

EN 55015:2013 Limits and methods of measurement of radio disturbance characteristics of electrical lighting and similar equipment

EN 62471:2008 Photobiological Safety of Lamps and Lamp Systems

Barberà del Vallès, 10th February 2019

Authorized Administrator - Javier Fdez. de Valderrama



GENERAL WARRANTY

VELVET LED light fixtures are guaranteed to be free from defects in workmanship and parts in a warranty period of two (2) years from the date of purchase. Defects that occur within this warranty period, under normal use and care will be repaired or replaced at VELVET discretion, solely at our option with no charge for parts or labor. In the event of the equipment malfunction, contact the dealer from which you purchased the product. Please note that you will not be reimbursed for the cost of bringing the equipment to the VELVET Repair Centre.

VELVET reserves the right to replace the product or relevant part with the same or equivalent product or part, rather than repair it. Where a replacement is provided the products or part replaced becomes the property of VELVET. VELVET may replace parts with refurbished parts. Replacement of the product or a part does not extend or restart the

Warranty period.

RETURNS POLICY

Returns or exchanges from the customers will be accepted within 15 days of delivery and will not include the actual shipping costs. Item(s) must be in original packaging and condition, must not be assembled, and must include its original user manual.

This warranty does not cover any damage resulting from:

- Failure to follow the instructions in the instruction manual Repair, modification or overhaul not conducted by any authorized VELVET personnel.
- Fire, natural disaster, act of God, lightning, abnormal voltage, etc.;
- Submergence in water (flooding), exposure to alcohol or other beverages, infiltration of sand or mud, physical shock, or dropping of the equipment and other unnatural causes.

This warranty only applies to the LED panel and not to the accessories, such as barn doors or mounts. Any consequential damages arising from failure of the equipment, such as expenses incurred in taking pictures or recording images or loss of expected profit, will not be reimbursed whether they occur during the warranty period or not.

Parts essential to the servicing of the light equipment (that is, components required to maintain the functions and quality of the fixture) will be available for a period of five years after the product is discontinued.

velvetlight.tv



VELVET

made to last

2020. Copyright VELVETLight. All rights reserved